



IMPACT REPORT 2025



ABOUT OUR CAMPUS

54 ACRE
CAMPUS

Serving South King County families and regional sports organizations

1.2+M ANNUAL
VISITS

Players, students, families, and fans gather here each year

12 OUTDOOR
SOCCER FIELDS / **2** INDOOR
SOCCER FIELDS

Across three field complexes, including the Starfire Stadium

85,000 SQUARE FOOT
ATHLETIC CENTER

Indoor fields, meeting spaces, and training facilities

HOME TO

**YOUTH LEAGUES,
TOURNAMENTS,
PRO TRAINING &
STEM PROGRAMS**

A year-round hub for sports, learning,
and community programming



A YEAR OF IMPACT

A TURNING POINT IN OUR FUTURE

In 2025, Starfire began redefining what impact truly means. For more than 23 years, we have delivered inclusive soccer and STEM programs on our 54-acre campus to help empower youth regardless of income or background.

But with more than 1.2 million annual visits—and nearly 70% of participants engaging through partner organizations—we recognized a broader responsibility. If our mission is to enhance opportunities for disadvantaged youth, Starfire's impact cannot stop within our own programs.

That's why this past year, we aligned every partnership, sponsorship, and tenant relationship around a singular expectation: partnering with Starfire must expand access for underserved families across South King County.

At Starfire, community impact is no longer something we simply measure. Rather, it's something we require from all our stakeholders.



LIVE YOUR PASSION



OUR NONPROFIT MISSION IN ACTION

Starfire exists to help create access, opportunity, and belonging for youth and families who might otherwise be left out. As a nonprofit social enterprise, we use our campus, partnerships, and earned revenue to support soccer, STEM, and other youth programs that serve families across Tukwila and South King County.

That mission extends beyond the programs we operate directly. It also shapes how we work with sponsors, tenants, professional soccer clubs, and, above all, our community partners. At Starfire, the mission is not a separate initiative; it's built into everything we do.

“At Starfire, every game played and every field reserved helps expand opportunity for youth across South King County.”



NEW CORPORATE PARTNERSHIPS: HEALTH AND FINANCIAL EQUITY MEETS YOUTH OPPORTUNITY



Seattle Children's®

In 2025, Starfire advanced a new corporate partnership model rooted in shared mission rather than just sponsorship. **Seattle Children's** joined as a major partner and will provide athletic training services at several Starfire tournaments each year to ensure that all kids can thrive on and off the field.

“Seattle Children's is proud to work with Starfire to provide care for more youth athletes in our community. Together, we share a commitment to helping kids stay active and engaged in life—supporting their health today while building the habits, skills and connections that will sustain their physical and mental well-being for years to come.”

—Dr. Burt Yaszay
Chief of Orthopedics and Sports Medicine,
Seattle Children's



We are also thrilled to have **WaFd** as a sponsor, supporting our athletes' financial health and setting them up for lifelong success. Their support in “helping to build healthy, thriving communities” is greatly appreciated.

These key alliances enable us to expand financial assistance for youth programs, increasing access to safe, structured play and STEM learning for underserved families across King County.



SOCCER ACADEMY

Through Starfire's Soccer Academy, young players gain more than athletic skills — they build confidence, friendships, and a sense of belonging.

In 2025, more than 1,600 youth participated in Soccer Academy programming at Starfire, with financial assistance helping ensure that more families could take part regardless of their ability to pay.

Programs including Stars classes, Rising Stars Academy, All Stars Academy, and 4v4 mini league give children welcoming entry points into the game while helping them develop teamwork, resilience, and joy in movement.

In South King County, where many families face barriers to organized youth sports, soccer becomes a powerful bridge across cultures and communities. At Starfire, it is also a pathway to confidence, connection, and growth.

126 KIDS RECEIVED
FINANCIAL AID FOR
2,273 SOCCER CLASSES



“It is, by far, the boys’ favorite place to be during the week!”

— Financially-assisted family

“I enjoy interacting with everyone and learning new things I didn’t know before. As a STEM mentor, I’m proud to influence the younger generation and our community positively.”

—Gio, STEM mentor



OUR SUMMER CAMPS



Starfire provided unforgettable experiences for 92 young people over the summer, fostering growth both on and off the field. Our curriculum extended beyond soccer with four immersive field trips, including two inspiring visits to the Museum of Flight, a day on the ice at the Kraken Community Iceplex, and an inside look at professional athletics at the Seahawks training camp.

Central to our mission is ensuring these opportunities remain accessible to all, we were proud to offer significant financial assistance to our community. 40% of participants received financial aid support, ensuring everyone had an unforgettable summer.

STARFIRE 2025 SUMMER CAMPS





STARFIRE STEM

Across South King County, many students face significant barriers to academic opportunity. In nearby districts, math proficiency declines sharply by middle school, and school funding cuts continue to reduce access to enrichment programs. Starfire’s STEM Academy helps meet that need by giving students engaging, hands-on learning experiences that build both skills and confidence.

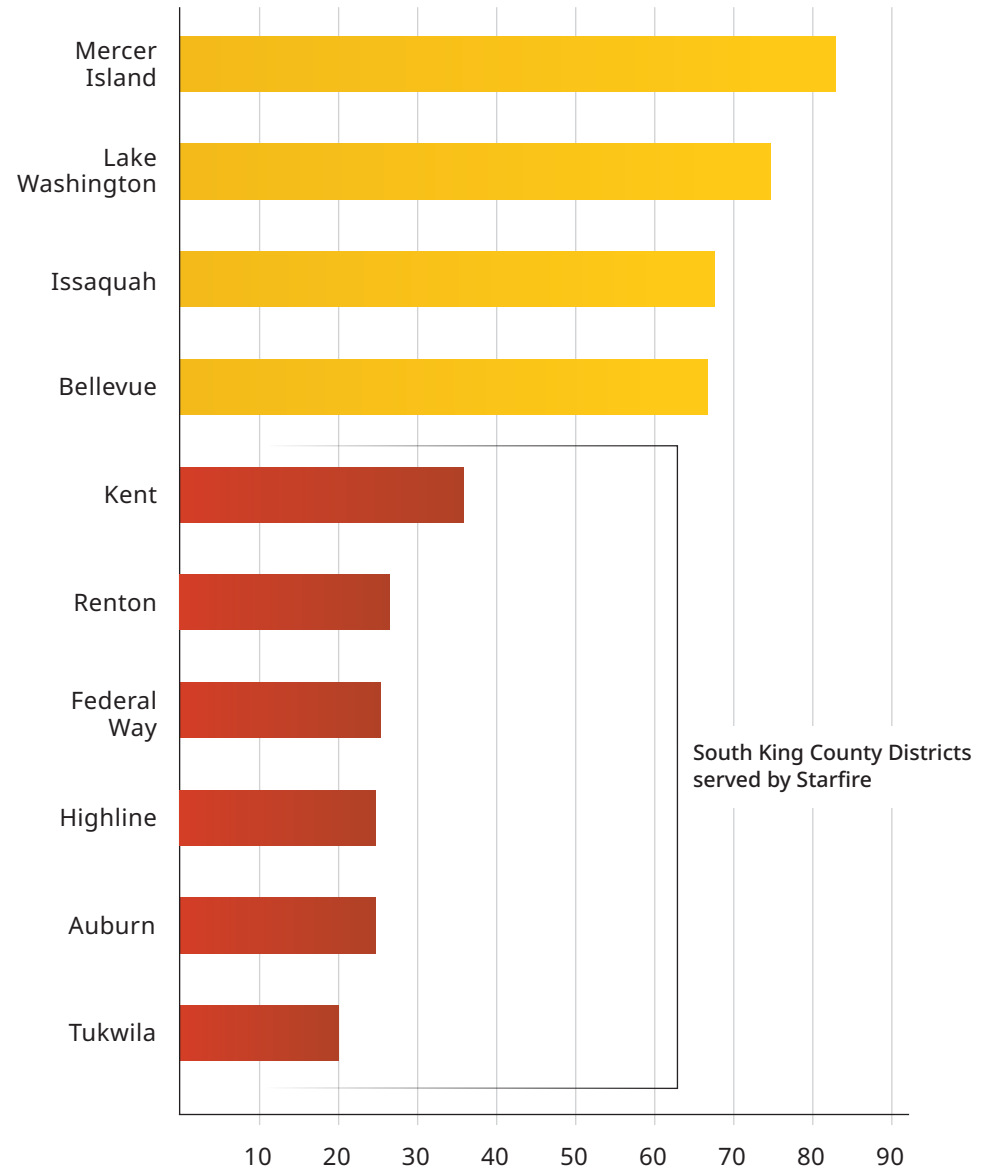
By combining science, creativity, mentorship, and real-world exploration, Starfire helps young learners see themselves as capable problem-solvers with futures in STEM.

39% OF 4TH GRADERS
MEET MATH PROFICIENCY
STANDARDS IN OUR REGION

28% OF 8TH GRADERS
MEET MATH PROFICIENCY
STANDARDS IN OUR REGION

80% OF STUDENTS
IN TUKWILA SCHOOL DISTRICT
QUALIFY FOR TITLE 1 SERVICES FOR
LOW-INCOME FAMILIES

Percentage of 8th graders at or above proficiency in math





“Access to safe, world-class facilities and meaningful programs isn’t a luxury for the kids and families of South King County, it’s a lifeline. At Starfire, we’re not just providing a place to play; we’re creating opportunities, building confidence, and opening doors that are helping to change kids’ lives.”

— Eric Olmstead
President & CEO



“Starfire’s STEM program didn’t just teach my child about science and math; it gave him new confidence. He now sees himself as capable and included, with a future that’s full of possibilities.”

— Parent of child in Starfire’s soccer and after-school STEM program



STEM ACADEMY

STEM programs at Starfire are designed to build knowledge and confidence. Participants this past year demonstrated tremendous growth in listening, communication, respect for others, and understanding of STEM concepts.

Over half of STEM participants at Starfire received financial assistance, helping to ensure that cost did not become a barrier to opportunity.

These outcomes reflect the power of hands-on learning, strong mentorship, and an environment that encourages young people to explore, experiment, and succeed.

% OF STEM PARTICIPANTS THAT SHOWED IMPROVEMENT IN:

83% LISTENING SKILLS

86% COMMUNICATION SKILLS

89% UNDERSTANDING SKILLS & RESPECT TOWARDS OTHERS

% OF STEM PARTICIPANTS BENEFITING FROM STARFIRE FINANCIAL ASSISTANCE:

54%



2025 Impact Report



YOUTH SPORTS: A PLATFORM FOR GROWTH

At Starfire, amateur sports are about far more than simply competing on the pitch. They are an active platform for building confidence, teamwork, resilience, and a sense of belonging, inspiring stakeholders to see their investments as fostering meaningful youth growth.

From practices to camps to tournament play, young athletes of all backgrounds come to Starfire to develop their skills and experience the thrill of sport. In one of the

most diverse regions in the country, our soccer and other field sports create a shared language that brings communities together.

Every game, every season, and every team contributes to a larger purpose: helping youth and families feel connected, supported, and inspired to grow.



IN 2025 AT STARFIRE:

67K+

KIDS TRAINED, DEVELOPED AND GREW IN SPORTS

30+

AMATEUR TOURNAMENTS & JAMBOREES WERE PLAYED

2K+

KIDS ATTENDED CAMPS

1.6K+

KIDS EXPERIENCED THE THRILL OF SPORTS THROUGH STARFIRE ACADEMY



THE LARGER STORY OF OUR IMPACT

Starfire takes our commitment to equity a step further by empowering the entire soccer community. We partner with 16 local nonprofit clubs by providing subsidized field rentals, along with reduced tournament and league fees. By lowering these costs, we enable our partners to provide scholarships directly to families within their program who need it most.

By fueling a comprehensive network of access, we are breaking down financial barriers and opening the doors for every child who dreams of taking the field.

\$681K

INVESTED IN KIDS AND COMMUNITIES
THROUGH FINANCIAL AID

1,664

KIDS RECEIVING FINANCIAL AID
THROUGH STARFIRE AND OUR PARTNERS

23%

OF PARTICIPANTS
RECEIVED FINANCIAL AID

SHE CAN PLAY CAMP



The She Can Play Camp reflects Starfire's commitment to ensuring that every child feels welcome and supported in sports. The program was created after Starfire and Pac Northwest Soccer Club identified a troubling trend: many girls were leaving organized sports during late elementary and middle school years. In response, the two organizations launched She Can Play — a special soccer experience designed specifically for girls ages 8 to 12.

It's led by professional women players and collegiate coaches, giving participants the opportunity to develop skills, build confidence, and learn from strong female role models. Our second annual She Can Play Camp welcomed approximately 95 girls, and the response from participants and families was overwhelmingly positive. Starfire made it possible for five girls to attend at no cost, ensuring access for those who might otherwise be unable to attend.

With strong demand and enthusiastic feedback, She Can Play has become an important step toward keeping more girls engaged in sports and building confidence both on and off the field.

At the camp, the girls had the opportunity to gain:

TECHNICAL DEVELOPMENT

Players worked on their ball mastery and technical skills

POSITIVE FEMALE ROLE MODELS

Players got to connect with female coaches and other positive role models

FRIENDSHIP BUILDING

Players got the chance to build lasting friendships with other players

SMALL-SIDED GAMES

Players participated in small-sided games to help them grow and build confidence

“The coaches are women who are successful in soccer and I want to be like them.”

—Mya, 10-year-old on PAC NW's Girls 2015 Maroon Team



GLOBAL SOCCER CAMPS

Bringing world-class coaches to our community



Hosted by:



REAL MADRID



FC BARCELONA



VALENCIA



ATLÉTICO
MADRID



PARIS SAINT-
GERMAIN



ENHANCING THE STARFIRE EXPERIENCE

Starfire continues to invest in the day-to-day experience of the youth, families, and visitors who spend time on our 54-acre campus. In 2025, campus upgrades included LED stadium-light retrofits for Fields 1 through 4 and a replacement stadium scoreboard, which together enhance safety and visibility for our players and guests.

Our on-site tenants and vendors also help shape the Starfire experience. From food and hospitality to performance training and retail, these valued partners contribute to a welcoming, high-energy environment that supports the entire South King County community.

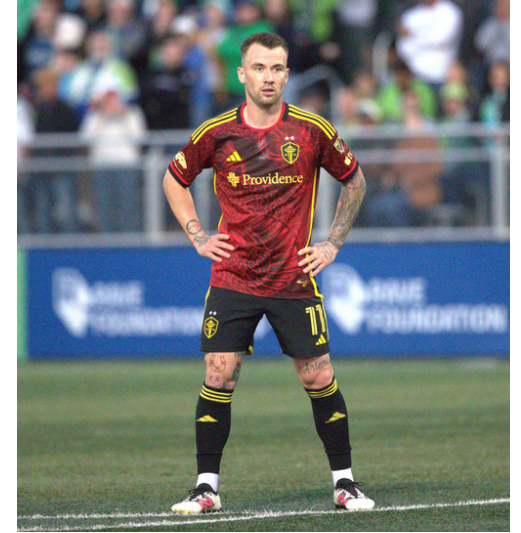


On-Site Amenities:



PROFESSIONAL SPORTS & EVENTS

Where professional competition fuels youth ambition



SEATTLE
REIGN
TRAINING



SEATTLE
SEAWOLVES
HOME STADIUM



TACOMA
DEFIANCE
HOME STADIUM



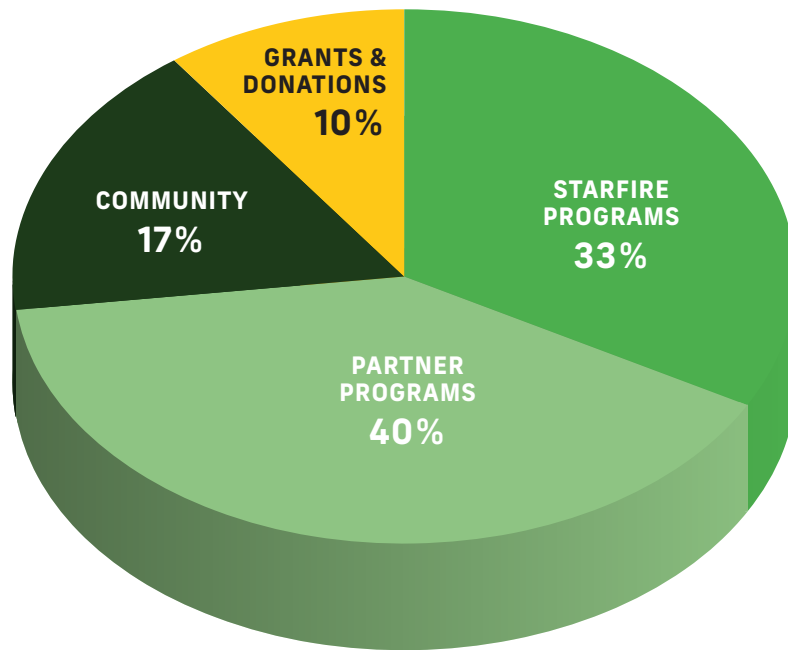
SEATTLE
SOUNDERS
HOME OF US
OPEN CUP
(EST. 2005)



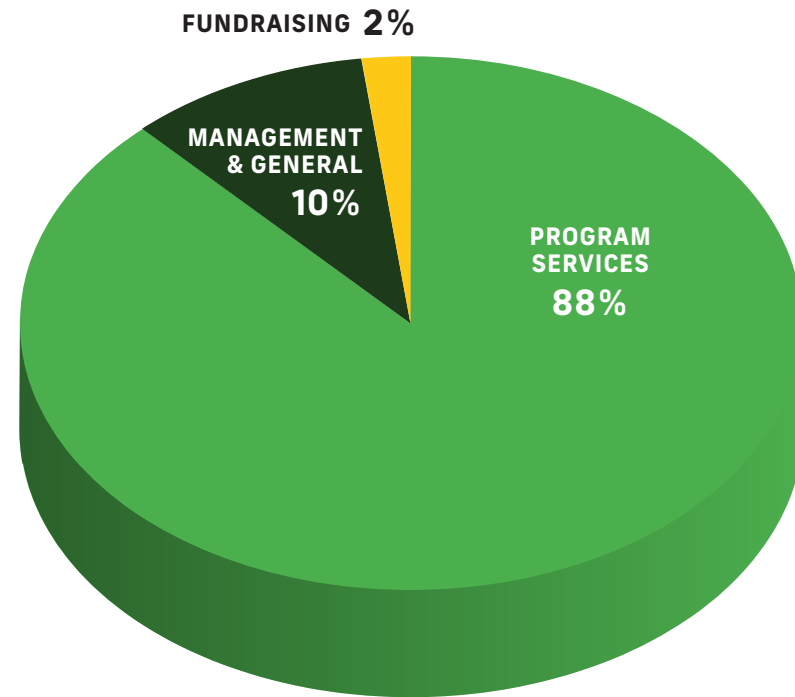
FINANCIALS

Starfire is a nonprofit 501(c)(3) social enterprise. We use the fees from teams, clubs, and partners who use our facilities to make our programs accessible to underserved youth.

REVENUE
\$7,737,169



EXPENDITURES*
\$6,998,418



*Excludes capital repayment obligations and expenditures.



THANK YOU TO OUR PARTNERS

The impact reflected throughout this report is the result of shared commitment. Starfire is grateful to the nonprofit partners, sponsors, clubs, tenants, and community supporters who help expand access and opportunity for youth and families across South King County. Together, these partnerships strengthen not only our programs, but the broader community we are all working to serve.



THANK YOU TO OUR PARTNERS & SUPPORTERS





Thank you to our partners, supporters,
donors, and all of our community!

For more information contact:

outreach@starfiresports.com

starfire.org